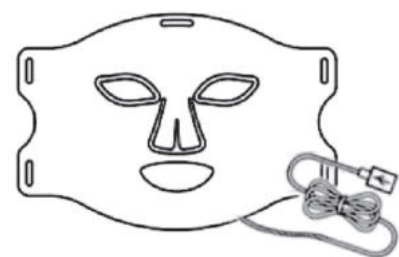


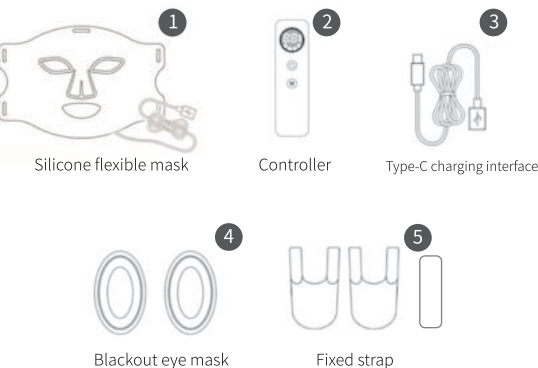
Light Therapy Mask Device Instructions



Product Description

- 1 Helps skin care:** The LED light meter can be used as a collagen mask to help absorb nutrients in skin care products faster and better, making the skin delicate, white, plump and elastic.
- 2. Suitable for oily skin:** Very suitable for oily skin and skin, improving oil balance. It reduces acne. Reduce oil secretion, make facial skin more balanced, help maintain skin health, and regulate oily skin.

Product specifications

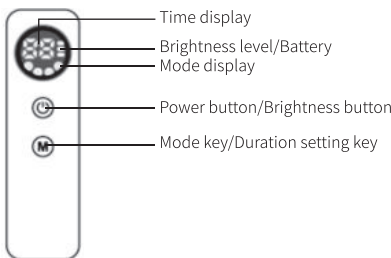


1

Product parameters

Rated voltage	3.7V	Charging voltage	5V
Rated power	3.2W	Charging current	560MA

Controller operating instructions



Time display: ① The time is displayed in countdown mode from the set duration. When the time is displayed as 0, the mask instrument shutdown automatically

Brightness level/Battery: Display battery power 3 seconds before turning on (one light on means the battery power is 30%, two lights on) Indicates that the battery power is 60%, three lights on indicates that the battery power is 100%), and the brightness level is displayed after 3 seconds of power on. hint When the light flashes, it means the battery is low and needs to be charged.

2

Mode display:

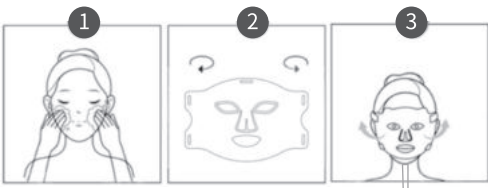
- There are 7 modes.
- Mode 1: red light (the first indicator light is on);
- Mode 2: Blue light (the second indicator light is on);
- Mode 3: yellow light (the third indicator light is on);
- Mode 4: white light (the fourth indicator light is on);
- Mode 5: Purple light (the first and second indicator lights are on);
- Mode 6: green light (the first, second, and third indicator lights are on);
- Mode 7: Cyan light (four indicators light up at the same time).

Power button/Brightness button: Long press the power button to turn the phone on and off, and then press it briefly to adjust the brightness. There are three levels of brightness adjustment.

Mode key/Duration setting key: Short press the mode key to switch modes; long press to set the working time, 5 minutes, 10 minutes Clock, 15 minutes, 20 minutes are optional, and the default is 10 minutes at power on.

3

Instructions for use clean Install wear



1. Cleanse face and wipe away excess moisture
2. Install the shading goggles and connect the straps to the mask
3. Wear a mask and turn on the controller



4. Free choice of working mode
5. Take off the mask for facial care
6. Wipe the silicone mask

4

Notice:

1. After use and care, use a soft towel or wet wipe to wipe the silicone part, please ventilate it to dry and then store it in a dust bag.
2. Do not have direct contact with water.
3. It is recommended to use 3-5 times a week, with a cycle of 4 consecutive weeks.
4. When using it for the first time, please fully charge the device and do not use it during charging.

The following people should not use this product	1. People who are pregnant and lactating; 2. People who are photosensitive or who are taking any drugs that may cause photosensitivity; 3. People suffering from genetic eye diseases or skin diseases (such as lupus erythematosus, photosensitive eczema or albinism, etc.)
Charging instructions	1. This product contains a lithium-ion battery. This product does not support power-on operation when charging. 2. When the brightness control indicator flashes, the device is in charging state. When all three brightness control indicators light up and stop flashing, charging is complete.

5

Light sensitivity test

Before trying this product for the first time, please perform a light sensitivity test:

step 1 first step	<ul style="list-style-type: none">Place the device on your arm and turn on the switch to illuminate for 10 minutes. If your skin appears red or itchy.Symptoms indicate that you may have photosensitive skin. It is recommended that you stop using it or use it again before using it again.Consult a dermatologist
Step 2	<ul style="list-style-type: none">Before use, please clean your face and keep it dry (without makeup) to prevent cosmetics that may contain.Some light-sensitive ingredients may affect skin care efficacy.
Step 3	<ul style="list-style-type: none">After use, the skin may become red. This is a normal reaction of the skin and will occur within 1-2 days.It will return to normal within an hour. If you feel burning or other discomfort during the process, please stop using it immediately.

6

How to use and steps

step 1	<ul style="list-style-type: none">Clean face thoroughly
Step 2	<ul style="list-style-type: none">Connect the straps to the mask, place the mask on your face, adjust and buckle the straps to secure the mask.On the face, press and hold the controller button to turn on the device.
Step 3	<ul style="list-style-type: none">This equipment sets four working modes according to different light energies, which can be adjusted as needed.Adjust the brightness of each mode. After powering on, the device defaults to low gear, and the gear can be adjusted by pressing the button. When the brightness level light flashes, the device is in a low power state and needs to be charged.
Step 4	<ul style="list-style-type: none">The device will automatically turn off within the set time after being turned on. After the device is turned off, take off the mask and end the irradiation.Just follow your daily skin care routine.
Step 5	<ul style="list-style-type: none">Recommended 3-5 times a week, 4 consecutive weeks as a cycle

7