

## ELECTRIC CALLUS REMOVER V-601

Model: V-601

Certificate No.: KPL2512395688164M-3RC

KPL2512395688164M-2EC

## TECHNICAL PARAMETER:

Charging voltage: 5V

Charge time: appr. 2 hours

Use time: appr. 2 hours

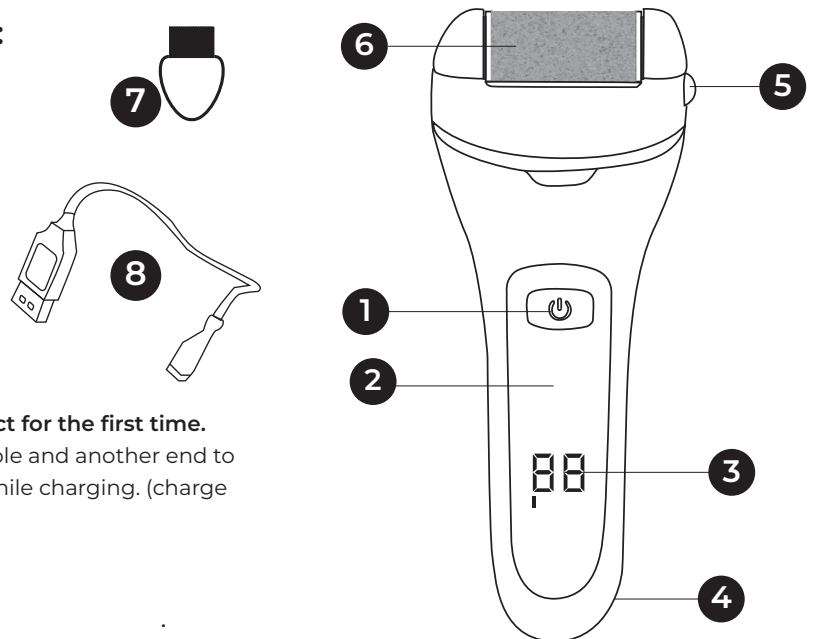
### 1. WARNINGS:

1. Please read this manual carefully before using the product and keep it for future reference.
2. This product can not be used as toys for young children.
3. This product should not be used in special environments such as corrosive or explosive gases.
4. Do not disassemble, repair, modify the product by yourself. This will result in loss of warranty.
5. Do not store the device in a place exposed to direct sunlight or in an excessively hot or humid environment.
6. Keep away from water when charging.
7. Unplug after charging is complete.
8. Do not submerge the product in water for long time. Please rinse under running water.
9. Choose the type of head depending on the needs of the skin.
10. For hygienic reasons, it is recommended that one roller head should be used for one person, preferably not shared with others.
11. Please use this product after consulting your doctor if you have any skin problems or other medical problems.
12. Please do not stay in one area for more than 3 seconds while using.
13. Do not use if the skin is red, irritated, infected.
14. Do not use this product on sputum, ulcers or wounds on the skin.

**ATTENTION:** To prevent any accident or damage to your body or product, please keep away from any yarn, clothing, hair and eyelash etc.!

### 2. CHARACTERISTICS OF THE DEVICE:

1. ON-OFF/20level speed switch.
2. ABS body
3. LED display, indicating the battery level
4. USB charging interface
5. Roller head-changing button
6. Roller head
7. Cleaning brush
8. Worldwide USB charging cord



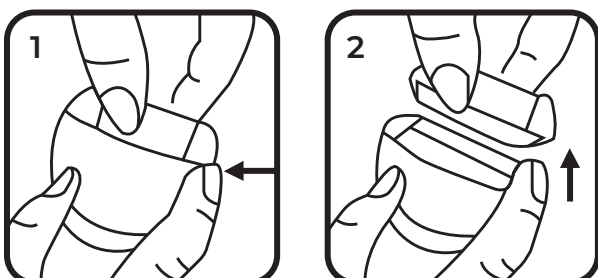
### 3. CHARGING INSTRUCTION:

**ATTENTION:** Please fully charge before using this product for the first time.

Plug one end of charging cable into the body charging hole and another end to the USB connector. The charging indicator will light up while charging. (charge time should not exceed 12 hours).

### 4. ROLLER HEAD DISASSEMBLY & ASSEMBLY:

1. Replace the roller head as follows. Choose the suitable roller head according to the roughness of the skin and the expected effect. To replace the roller head, ensure the unit is turned off and remove from the unit by pressing the head-changing button on the side of the unit. Gently pull the roller away from the unit.
2. (Please refer to Figure 1 and Figure 2)  
Place the new roller in the device by pressing the elements on both sides of the shaft head. Please confirm the roller head is securely attached to the device before use.



## 5. CALLUS REMOVAL:

This product is designed for fry and rough hand, foot or heel skin and should not be used in other parts of the body.

1. Ensure the product is charged and has enough power.
2. Clean or soften the skin, then dry the skin to ensure the best results. Do not use this product if there is a wound or bleeding on your skin.
3. Gently turn the roller head to stay in the dry and rough skin area for 2-3 seconds. Do not press too tight, let the roller head gently slide over the skin. If the press is too tight, the product will stop working.
4. During use, you can stop and check if you are satisfied with the condition of callus removal. If not, you can stay on this part for another 2-3 seconds and check again.
5. Rinse the skin or use a wet towel to clean the skin again.
6. After use, turn off and clean the device.
7. Store this product in a dry, ventilated, cool place.

## 6. 3 DIFFERENT ROLLER HEADS:

- **Fine Roller Head** - suitable for the callus of hands, cocked dead skin and more delicate skin care.
- **Medium-grained Roller Head** - suitable for the newly formed accllusion and normal skin care.
- **Coarse Roller Head** - suitable for stubborn thick callus and dead skin.



*In accordance with art. 13 sec. 1 of the Act of 11 September 2015 on used electrical and electronic equipment (Journal of Laws 2015 item 1688), we inform you about the correct handling of waste electrical and electronic equipment:*

1. It is prohibited to place used electrical and electronic equipment together with other waste - this is confirmed by the marking in the form of a "crossed-out bin", which requires selective collection of this type of waste.
2. Electrical and electronic devices may contain hazardous substances, mixtures and components, which, after entering the environment, may pose a serious threat to the health and life of humans and living organisms.
3. Used electrical and electronic equipment should be transferred only to authorized collection points, the list of which should be included on the website of each Municipal Office.
4. Households play a key role in the waste management system for used electrical and electronic equipment due to the possibility of their direct transfer to authorized collection points and the elimination of undesirable social habits resulting in leaving waste equipment in places not intended for this purpose.



*In accordance with Directive 2006/66/EC of the European Parliament and of the Council of 6 September 2006 on batteries and accumulators and waste batteries and accumulators and repealing Directive 91/157/EEC, this product is marked with the symbol of a crossed-out wheeled bin. The symbol indicates that the batteries or accumulators used in this product should not be disposed of with normal household waste. Users of batteries and accumulators must use the available collection network for these items that enables their return, recycling and disposal.*

IMPORTER

Made in PRC