



QUICK GUIDE

Lash & Brow Tinting

by *hairpearl* & Biosmetics EYE CARE

ESSENTIAL FACTS – BEFORE THE ACTION STARTS

The *hairpearl* & Biosmetics Brow Lifting & Lamination System has been created for professional use only!

Only well-educated and experienced professionals should apply a lash lift or a brow lamination since this treatment requires essential skills, abilities and competent knowledge of anatomy, dermatology and hygienics etc. Also, a professional has to

- be informed about all health laws and regulations within the region in which the service will be provided.
- comply with all consumer laws/regulations and occupational Health & Safety laws within the region in which the service will be provided.

PRODUCTS REQUIRED TO PERFORM TREATMENT

- *hairpearl tint* (regular or *ppd-free*)
- *hairpearl Cream Developer Oxidant 3%*
- *hairpearl Tint Remover*
- *hairpearl Brow and Lash Shampoo Foam*
- *hairpearl Relaxing Eye Cream* (enriched with Panthenol)

- Biosmetics **MOIST Serum** (The Moisturizing After Care Pen)
- Biosmetics **Tinting Brush** (round tip for lashes and slanted tip for brows)
- Biosmetics **Aloe Eye Gel Patches** (self-retaining and moisturizing)
- Biosmetics **Compound Jar or Dual Dish Porcelain Mixing Bowl**
- Biosmetics **Disposable Mascara Wands**
- Biosmetics **Microbrushes**
- Biosmetics **Lash Wiper** – Lotion wiping brush

- Cotton pads, swabs and damp cotton buds, lint free
- Gloves
- Head band (for client)
- Timer, towels and a cozy blanket

PREPARATION

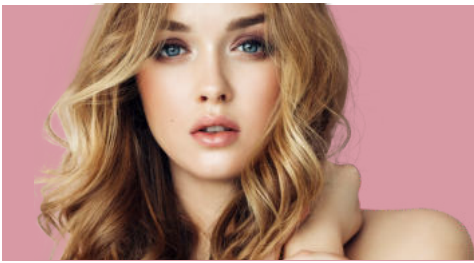
- Take a “Before” photograph of client and if desired bring clients` brows into shape by using a few drops of *hairpearl Eyebrow Gel* to preview the desired result. **Cleanse brows and lashes with *hairpearl Lash and Brow Shampoo Foam*** and a cotton pad. Comb through the brows and lashes using a disposable mascara wand in an upward stroke.

In case a patch test is required please perform prior to each application. Inform your client that the patch test does not guarantee that an allergic reaction will not occur. (We recommend a written clients declaration!)

Please find here an example of a patch test without any legal obligation. (Please keep in mind that it is absolutely necessary to comply with your regional health laws):

1. Clean a small area of the skin behind the ear or on the inner surface of the forearm.
2. Following the preparation instructions below, mix the colour and developer.
3. Apply the tint to the area you have prepared for the patch test and allow to dry. Advise your client to leave colour on skin for 24 hours.
4. If no irritation or inflammation is apparent within 48 hours after application, **it is usually assumed** that no hypersensitivity to the product exists.





QUICK GUIDE

Lash & Brow Tinting

by *hairpearl* & Biosmetics EYE CARE

STEP 1 – MIXING:

1. Mix *hairpearl Eyelash and Eyebrow Tint* with *hairpearl Cream Developer Oxidant* in the ratio 1:1. Use a *Biosmetics Mascara Wand* or a tinting brush until the consistency is a creamy paste. (Make sure consistency is not runny or drippy.)

Note: Temperature fluctuation can cause settlement of developer solution, but this has no negative effect on the quality of the product. **Shake well** and store all tints, developers and other liquid products in a cool place.

Note: The colour of the mixture is not the colour that the hair will be once it is tinted. To get an idea of the final colour, leave a wooden applicator in the mixture for the desired time.

2. Let set the mixed tint for at least 3-5 minutes while you prepare your client.

STEP 2 – TINTING:

1. **Client should be sitting** upright in a chair or on a facial table with head slightly tilted back. Do not apply with head in a fully reclined position.
2. **Cleanse** eyelashes and eyebrows thoroughly with *hairpearl Brow and Lash Shampoo Foam*. Our Brow and Lash Shampoo is geared to the needs of professionals and ensures that lashes and brows are free from oil, makeup, and other residues.



3. Instruct the client to look up. Remove the protective backing from the self-retaining *Biosmetics Aloe Under Eye Gel Patches* and place the pads under the lower lid, as close as possible to the lower lash line, without covering lashes. If needed use a *Biosmetics Microbrush* to release single lashes from under the Eye Patch.



You may also use the **waxed** *hairpearl Protection Papers*. To do so, first apply a thick layer of *hairpearl Relaxing Eye Cream* (enriched with Panthenol) under the lower eyelid. Then place a waxed *hairpearl Protection Paper* under the lower lid, which will prevent the tint from staining the skin. The cream will prevent the waxed paper from moving.

4. When tinting the lashes you need to use the *Biosmetics Tinting Brush with round tip*, apply cream tint to lower lashes first on both eyes. Make sure the tint covers all lashes, including baby lashes and those at the corners of the eyes, from base to tip.

When lower lashes are completed, instruct the client to close his/her eyes until the application and removal process is completed.



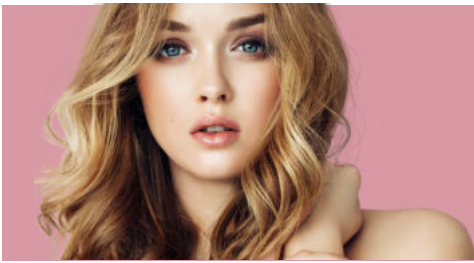
5. Apply cream tint to upper lashes from base to tip. Again, make sure all small lashes and the corner lashes are covered.

If tint accidentally gets in eyes, flush the eyes with plain water immediately!



For brow tinting please use the **slanted** *Biosmetics Tinting Brush*. The slanted tip ensures precise application and defines the shape of the brows!





QUICK GUIDE

Lash & Brow Tinting

by *hairpearl* & Biosmetics EYE CARE

- When applying to eyebrows, make sure eyebrow hair is completely covered, but do not press the dye into skin.
- If any tint gets on the face, remove it as soon as possible with warm soap and water. Do not use the *hairpearl Tint Remover* on face.
- Developing time will differ depending on texture and coarseness of the clients' hair, and the hairs original colour. Although the normal reaction time for developing is **10 minutes for lashes** and **3 minutes for brows**, lengthen these times may produce results darker than expected.



Reaction time:

Lashes:	8-10 minutes
Brows:	3-4 minutes

Our recommendation:

Allow Eyebrows to develop one and a half minutes. Then cleanse them and check the colour. If the eyebrows are don't dark enough, re-apply and allow to them to process again until the desired colour is achieved. Check the colour frequently. You can always reapply to go darker. However, if they become too dark, you will be unable to lighten them. The colour will have to wear off over time.

Please note:

When combining a lifting (or lamination) service with a tinting service, please reduce the reaction time of tint.

Reaction time when combining a lifting with tinting service:

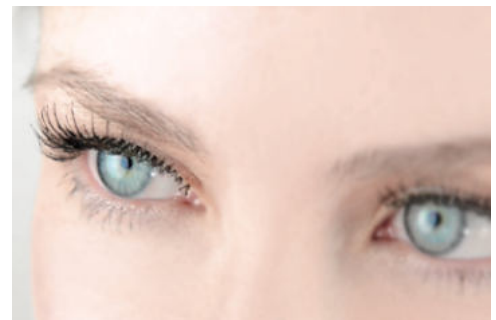
Lashes:	1-3 minutes
Brows:	1-2 minutes



- Remove protection pads form under eye area.
- While your clients` eyes are closed, use a dampened cotton wetted with warm water to remove product until no residue is visible. Hold tissue near eye area to capture any excess water.



- Provide a hydrating and soothing finish touch by applying a few drops of *hairpearl Relaxing Eye Cream* (enriched with Panthenol) around the eyes.
- Calm and tame eyebrows and lashes by applying the *Biosmetics MOIST Serum – the Lash and Brow Moisturizing Pen*. Hand your client a mirror so he/she can see his/her fabulous new look!



- Please note:** If you get tint on your hand while mixing, use a cotton ball dampened with *hairpearl Tint Remover* immediately to remove the tint. Then wash your hands with soap and water. Do not use any tint remover on the sensitive facial skin. Use a gentle soap or the *hairpearl Brow and Lash Shampoo Foam* and warm water to remove any tint on the face carefully.





QUICK GUIDE

Lash & Brow Tinting

by *hairpearl* & Biosmetics EYE CARE

STEP 2 – AFTERCARE INSTRUCTIONS

- Do not touch or rub your eyes, eyelashes, or eyebrows immediately after the treatment.
- If redness or any irritation occurs, apply a cool damp cotton compress to the eye area. If symptoms persists seek medical advice.
- The effect of the tint will start to diminish within 3-4 weeks as hair grows out and the tint colour fades. Strong sunlight/UV light can make the tint colour fade faster.
- Avoid washing your eyebrows and eyelashes, or swimming for 24 hours, as these activities can cause the tint results to fade. Also avoid exfoliating facial cleansers. Those containing AHA's or other chemical exfoliates may decrease the life of your tint. A gentle facial cleanser or eye makeup remover like the *hairpearl Brow and Lash Shampoo Foam* is recommended.
- Do not apply makeup or mascara or receive any other eye treatments for at least 24 hours after the tinting.
- Try to use oil free facial products around the eye area to prolong the tint colour.
- You can receive a lash and brow tinting treatment every 3- 4 weeks.
- If you have any questions about post-care, contact your salon/spa.

